

Industry

TDML/TDSL BATCH CONTROL UNIT



TDML/TDSL batch control unit

Rugged and functional manual and semi-automatic batch control unit suitable for several applications.

TDML/TDSL batch control units are guaranteed by Maddalena: manufacturer of high quality measuring instruments for the past century.

TDML/TDSL BATCH CONTROL UNIT

TDML/TDSL is a manual and semi-automatic batch control unit designed for reducing operation time and simplifying batching problems. It is ideally suited for the industry and for water batching in concrete applications.

The manual batch control unit (TDML) is equipped with a pointer indicating the delivered volume of water, a setting pointer and a lever for zero setting.

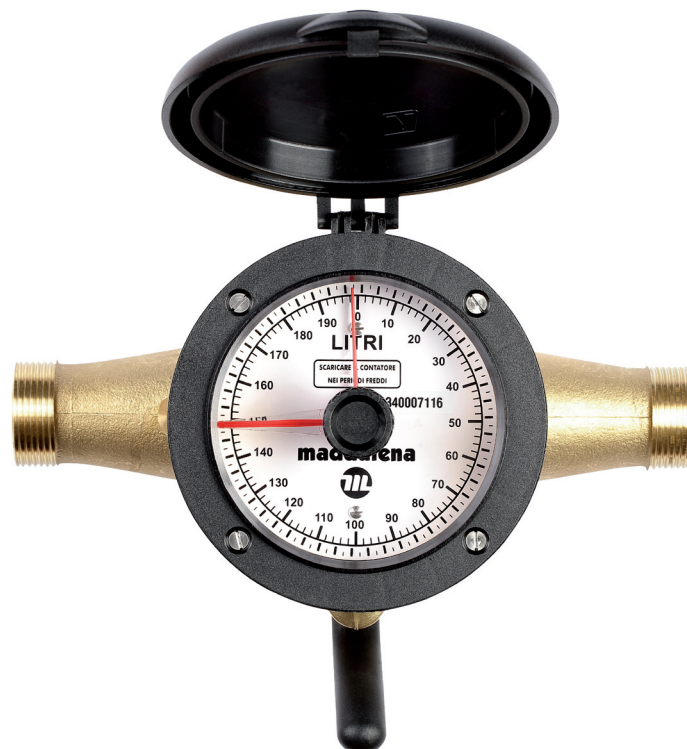
The semi-automatic batch control unit (TDSL) is equipped with an indicator pointer to set manually the volume to be delivered. When the value set is reached, an electrical signal of end of batching is sent.



TDML multi-jet

STRUCTURAL AND FUNCTIONAL SPECIFICATIONS

- Brass body (40 mm: hot forged brass; 50 mm: cast iron)
- Depending on the size, the unit may be combined with a multi-jet meter (DN 25 mm and 32 mm) or an axial rotor meter (DN 40 mm and 50 mm)
- Large, shock resistant, methacrylate dial
- Setting pointer with wiper
- The dial scale (full scale) depends on the type and size of the meter and on the application needs
- Minimum registration is always a hundredth of the full scale
- Cover for dial protection available
- Operating temperature: 30 °C (upon request: up to 90 °C)
- The 40 mm TDML version is available with direct output



HYDRAULIC PERFORMANCE

Size	mm	25	32	40	50
	in	1"	1.¼"	1.½"	2"
Q _{max}	m ³ /h	7	10	20	30
Q _t	m ³ /h	0.28	0.40	2.50	3.00

TECHNICAL SPECIFICATIONS

Error	Q _{max} to Q _t +/- 2%				
Pressure	bar	10/16	10/16	10/16	10/16
Full scale	l	100/200	100/200	200/500	200/500/1.000
		500/1,000	500/1,000	1,000/2,000	2.000/5,000* 10,000*

* Available only for TDSL batch control units

Weight (TDML)	kg	4.09	4.50	7.34	10.00
---------------	----	------	------	------	-------

DIMENSIONS

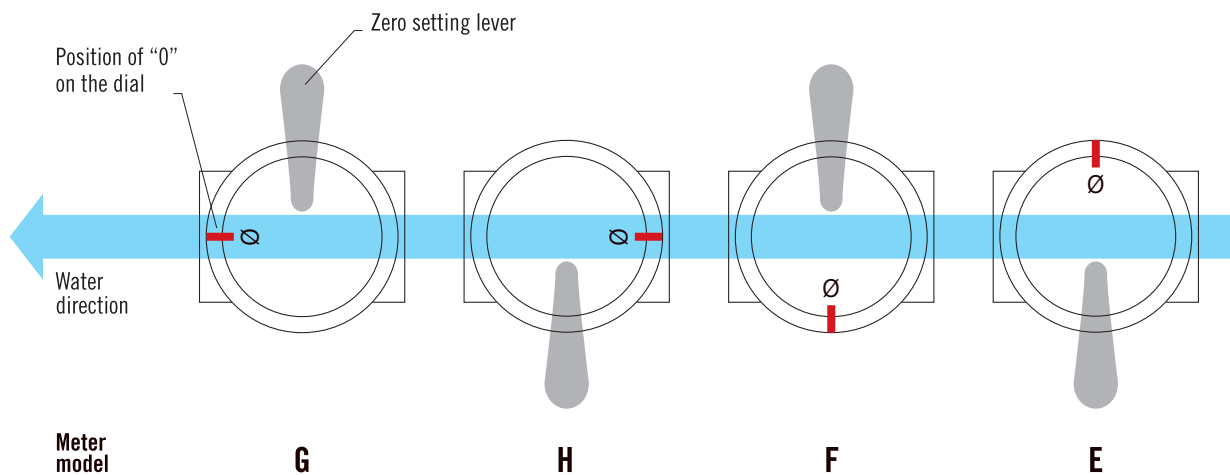
Length	mm	260	260	170	170
Width	mm	190	190	130	190
Height	mm	200	200	170	250 (flanged)
					200 (threaded)

SPECIFICATIONS - TDML BATCH CONTROL UNIT - PULSED 40 MM

Pulse reading	full scale l/p	200 / 3.2250	500 / 1.6075	1,000 / 1.6128	2,000 / 3.223
---------------	----------------	--------------	--------------	----------------	---------------

INSTALLATION AND DIAL AND ZERO SETTING LEVER POSITION

Dial position (horizontal, vertical and horizontal with vertical dial)



Attention: the zero setting lever is always at the inlet on 40 mm batch control units (it is on the opposite position on the pulsed version)

ACCESSORIES



COUPLINGS KIT

It comprises two nuts, two tail pieces and two rubber gaskets.



OTHER BATCHING OPTIONS

GAMMA 1-D-M BATCH CONTROLLER

Electronic batch controller suitable for any pulsed meter.
Rack-mounted, two high bright led displays,
six keys for instrument programming and batching control.

For more information on available accessories please refer to the relevant data sheet.

 **maddalena**[®]
www.maddalena.it

MADDALENA spa
Via G.B. Maddalena 2/4
33040 Povoletto (Ud)
Tel. +39 0432 634811
Fax +39 0432 679820
info@maddalena.it



ISO 9001 - Cert. n° 0773/5

For more information, please contact your sales representative:
